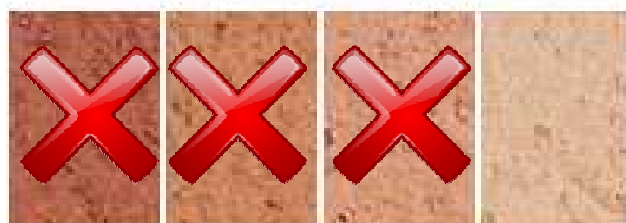
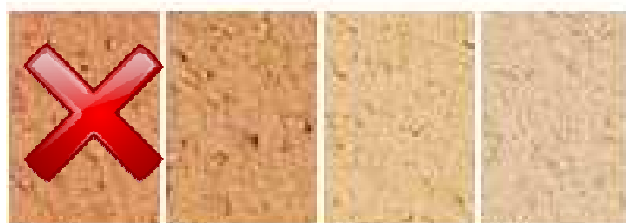


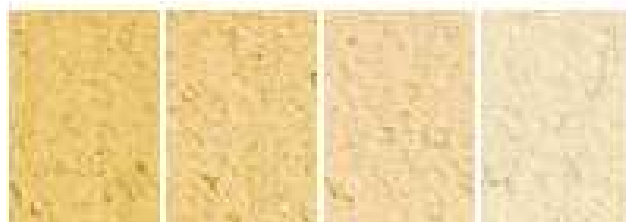
## Tons saturés



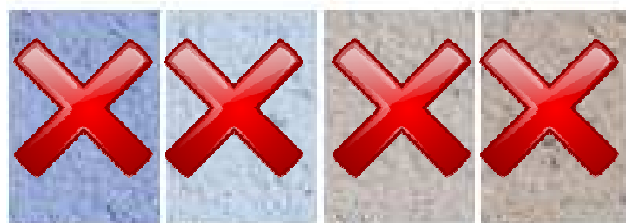
R90+ R80+ R70 R50



O90+ O80+ O70 T70

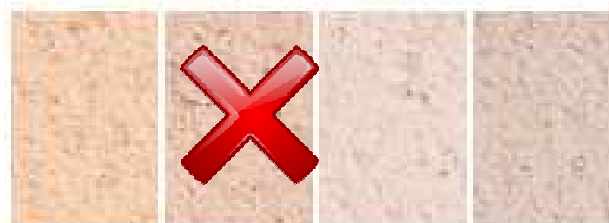


J70 J60 J50 J30

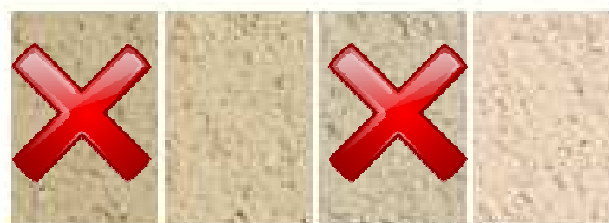


B30 B20 G50 G40

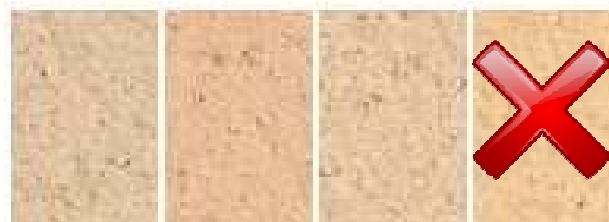
## Tons moyens



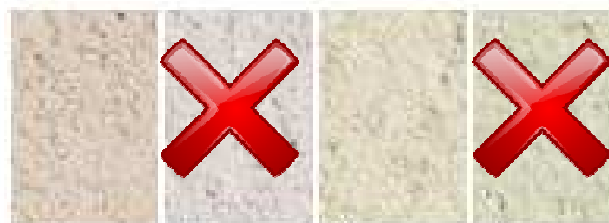
O20 R60 R10 R30



T30 T80 T60 T90



R40 O60 O40 J10

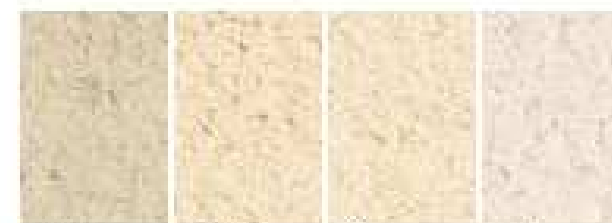


T10 G30 V10 V30

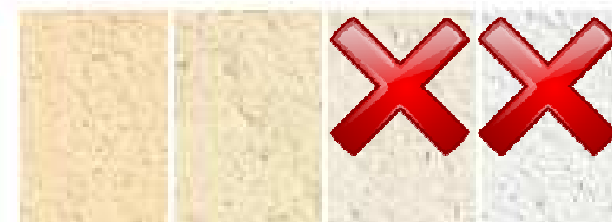
## Tons clairs



O50 R20 T20 O30



T50 O10 J39 G20



J40 J20 G10 BL10\*\*



B10 V20 T40 G00